

# K. J. SOMAIYA COLLEGE OF ENGINEERING

VIDYAVIHAR (E), MUMBAI – 400 077

(Autonomous College Affiliated to University of Mumbai)

(Accredited by NAAC with 'A' grade)

NIRF 2018 Ranked by MHRD



## Information Brochure (2018-19)

for Undergraduate, Postgraduate & Research Programmes

Downloaded from [collegekeeda.com](http://collegekeeda.com)

ॐ

ॐ पूर्णमदः पूर्णमिदं पूर्णात् पूर्णमुदच्यते ।  
पूर्णस्य पूर्णमादाय पूर्णमेवावशिष्यते ॥१॥

ॐ ईशावास्यमिदं सर्वं यत् किं च जगत्या जगत् ।  
तेन त्यक्तेन भुञ्जीया मा गृधःकस्य स्विधदनम् ॥२॥

मूकं करोति वाचालं पङ्गुं लंघयते गिरिम् ।  
यत्कृपां त्तमहं यन्दे परमानन्दमाधवम् ॥३॥

ॐ प्रणो देवी सरस्वती वाजेभिर्वाजिनीयती धीनामवित्र्यवतु ।  
ॐ चोदयित्री सूनृतांना चेतन्ती सुमतीनाम् । यज्ञं दधे सरस्वती ॥४॥

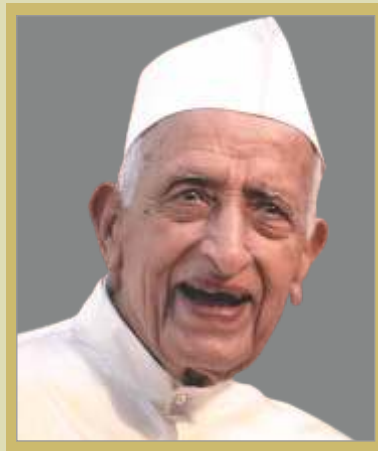
ॐ असतो मा सद्गमय । तमसो मा ज्योतिर्गमय ।  
मृत्योर्माऽमृतं गमय ॥५॥

ॐ सहनाववतु सहनौ भुनक्तु सहवीर्यं करवावहै ।  
तेजस्विनायधीतमस्तु, मा विद्विषावहै ॥६॥

सर्वेऽत्र सुखिनः सन्तु सर्वो सन्तु निरामयाः ।  
सर्वे भद्राणि पश्यतु मा कश्चिद् दुःखमाप्नुयात् ॥७॥

ॐ शान्तिः । शान्तिः । शान्तिः ॥

# Our Founder



*Padma Bhushan (Late) Pujya Shree  
Karamshibhai Jethabhai Somaiya  
(16<sup>th</sup> May, 1902 – 9<sup>th</sup> May, 1999)*



*Shrimati Sakarbai Somaiya*

## *A Message from the Founder*

*My Dear Young Students,*

*Welcome to you to the Institutions of Vidyavihar!*

*Your Finest Hour is here. The future belongs to you.*

*Let us all zealously work together and dedicate ourselves to build India of our dreams.*

*Remember, nothing was ever achieved without hard work.*

*Be bold but not be bowled over.*

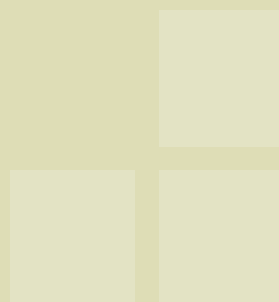
*Let Truth and Duty be your watchwords.*

*Never despair in the face of setbacks.*

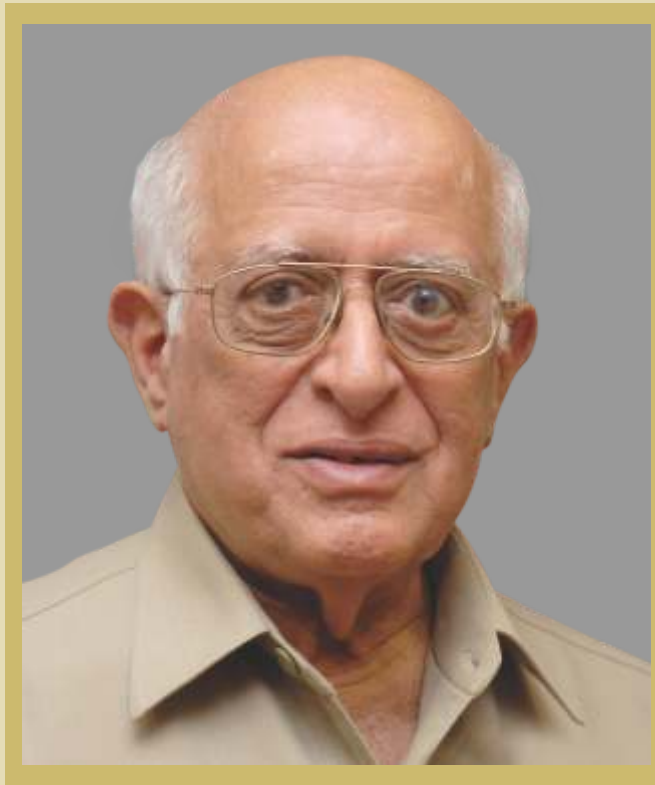
*Keep courage and continue to work with Fortitude.*

*Have faith in yourselves and in the Almighty.*

*Strive for your Goals and the future is yours!*



# Our Inspiration



*The Great Visionary and Transformational Leader  
(Late) DR. SHANTILAL K. SOMAIYA, B.SC., LL.B. (D.SC. HONORIS CAUSA)  
(29th December, 1927 – 1st January, 2010)*

*A Leading Industrialist and Businessman, he received various awards including prestigious 'Luminosa' and 'Sanskrit Mitra' titles strongly upheld the peaceful co-existence of religions and travelled extensively across the globe to spread the message of Indian Culture and Philosophy. He also made remarkable contribution to Education and up lift ment of 'adivasis'.*

# Message from Chairman



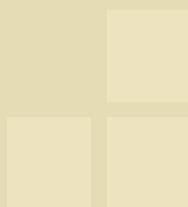
*I welcome you to Somaiya Vidyavihar. Somaiya Vidyavihar was founded over 50 years ago, as an institution dedicated to foster learning, innovation and character building.*

*The institution helps cultivate a climate of enquiry, questioning, and freedom to explore and contribute answers to problems, small and large, local or global.*

*Our campus has a large diversity of academic programs, and houses students from various disciplines, who come from different parts of India, and the world. The institution aims to develop young men and women who dedicate their learning to improve themselves, and for the common good.*

*Once again, I welcome you to our institution, and hope that you achieve great heights, and find out more about your own self.*

*Shri Samir Somaiya  
M.E. Cornell University, M.P.A. Harvard University*







*"Knowledge alone liberates". The great visionary Late Padma Bhushan Karamshibhai Jethabhai (K.J.) Somaiya exemplified this thought, when he founded Somaiya Vidyavihar (SVV). He dreamt of giving students much more than just a degree, making a positive difference in the quality of their life. Today SVV is a hub of various Educational Institutes, our college; K.J Somaiya College of Engineering (KJSCE), being one amongst them.*

*The College is situated in a lush green campus having excellent sports facilities; for both indoor as well as outdoor games. The two Wi-Fi enabled buildings of the College house a 430 seater auditorium, 6 seminar halls, airy classrooms, well equipped laboratories with modern equipment such as 3 D printer, CNC machine, etc. Unique email id to every student in the somaiya.edu domain, promotion of digital payments; either from or to the college, online receipt of transcripts, etc. are some of the initiatives of the College to*

*streamline the administrative services.*

*Appraisal from various accrediting bodies such as Director of Technical Education, National Board of Accreditation has been a regular feature in the College, first time being in the year 1998. College has been continuously striving to create ambience conducive to academic as well as overall development of students. The efforts became much more profound from the Academic Year (AY) 2014-15, when the College was conferred Autonomous Status; KJSCE becoming the first Self-financed (Private) Engineering College affiliated to University of Mumbai. Since then, curriculum as well as teaching in classroom / laboratories has a focus on active / collaborative learning, achieved through course projects, case studies, seminars, etc. In May 2017, the College was assessed by National Assessment and Accreditation Council (NAAC). The NAAC team reviewed various educational processes and outcomes; covering learning resources, faculty, research, infrastructure, organizational governance and student services. They also appreciated the relentless efforts of a faculty member which resulted in 3 international patents which the College holds. Since the quality standards as set by the agency were met with, the College; as a Tier I institute, could qualify to get a "A" grade.*

*Our new revision in syllabus; "KJSCE2018", to be implemented for students admitted to First Year B. Tech. in the AY 2018-19, has been designed based on the recent AICTE guidelines. Some of the highlights of this syllabus are: introduction of wide choice of branch specific electives, more number of open or interdisciplinary electives, etc. Students are motivated at the Under Graduate level itself to take up industrial/research internship, which will enable them to understand the problems faced by the industries and they will find it easy to adapt to the industrial needs. During Teaching-Learning-Evaluation, efforts are being made to strike a balance between traditional ways as well as using ICT tools.*

*College promotes co-curricular, extra-curricular activities as well as sports; making life outside classroom exciting and rewarding. What makes these activities very effective is the fact that these do not focus only on winning trophies but try to nurture generic skills such as leadership, effective communication, team work, etc. The College also encourages /promotes entrepreneurial inclination of the students by offering suitable courses such as Accountancy, Corporate Law, etc. which in turn will help them to create jobs for others. While merit holders are given cash prizes, need cum merit scholarships are available to needy students.*

*Many students showcased their projects in various competitions and were appreciated by national as well as International experts. Following are some of the noteworthy achievements of our students in the Academic Year 2017-18:*

# From Principal 's Desk



## *Smart India Hackathon*

- o Cash Prize of Rs. 75,000 in under Department of Space (ISRO) at Ahmedabad.*
- o Cash Prize of Rs 50,000 under Students Innovation category held at Pune*

## *Autonomous Water Rover*

- o Cash prize of Rs 2 Lakh in the All India Maruti Suzuki Colors of Youth "Project Technovation Challenge" competition promoting scholastic excellence*
- o Prize for "Most Realistic Project" at e-Yantra Ideas Competition 2018 conducted by IIT Bombay sponsored by MHRD through NMEICT.*
- o Cash Prize of Rs 25 K for the best design in prestigious Annual International Conference on Embedded Systems and VLSI design.*

## *Formula Racing Car Team Orion:*

- o KJSCE Orion Team was the only student Formula racing team having a female driver, Ms. Sanjana Dhulla. She was the only female driver amongst 200+ drivers across 90 teams. The team won various prizes in the Combustion vehicle category in the Formula Bharat Competition.*
- o The team also developed an electric vehicle system which won various prizes in the Electric Vehicle category in the same competition.*

## *Team Rhapsody:*

*The team represented the College in a short film contest held by MARD - Men against Rape & Discrimination, an initiative supported by many renowned social activists. They could secure a place in the top 6 teams in a competition participated by around 100 teams. The team regularly participates in street play competitions.*

## *Tata Academia Award:*

*In a Knowledge Fair organized by TATA Power, four Teams participated showcasing their projects for the Academia Award. One of the projects on "Solar Powered Auto-Irrigation System" secured 1st Prize in Tata Power Academia Award category.*

## *Projects for Western Railway:*

- o Water alarm system*
- o Announcement system for Bio-Toilets*
- o Linen Accountal System*

## *Projects in BETIC Lab:*

- o Development of Micro-Dermatoscope Used in Diagnosis of Skin Diseases*
- o Development of Craniotome for Skull Cutting*

## *Career Prospects:*

- o Placement in well-known companies such as Microsoft, Oracle, Barclays, Reliance Industries, Godrej & Boyce, etc.*
- o Good ranks in GATE.*
- o Admission to reputed foreign universities for their higher studies.*
- o Development of projects in national and international thrust areas such as Health Care and on Renewable Energy, etc.*

*The outcome of all these activities has been very encouraging. In fact, it can be seen that the college could receive various recognitions based on the performance.*

*So to conclude I would state that the time spent by the students in the College helps to stimulate/ challenge them, enabling them to realize their potential; which in turn leads to finding a meaningful career.*

*Dr. Shubha Pandit  
Principal*

# Why should you choose KJSCE



*Unparalleled Learning Experience*



*Student Activities*



*Inclusive Education Ecosystem*



*Inclusive Interaction & Placement*



*Vibrant Campus*

## Ranking

*Ranking of K. J. Somaiya College of Engineering in various surveys conducted in the year 2017-18*

Survey conducted by various agencies	Rankings
National Institutional Ranking Framework (NIRF), Ministry of Human Resource Development, Government of India	All India ranking in the band of 151-200
Times of India (i3RC)	17 <sup>th</sup> rank amongst top 50 Engineering Institutes across India 8 <sup>th</sup> position in top 100 private Engineering Institutes
India Today	15 <sup>th</sup> in the top 165 private Engineering Colleges in the country 3 <sup>rd</sup> rank in the west zone
Education World for Engineering College	43 <sup>rd</sup> rank
AICTE CII Survey 2018	Awarded with Gold category



# Salient features of K.J. Somaiya College of Engineering



1. *K. J. Somaiya College of Engineering is an institution committed to attain excellence through an ongoing dialogue with the industry and benchmarking ourselves with the best amongst peer institutions*
2. *Brand Name*  
*Somaiya is a brand name in higher education*
3. *NIRF Ranking by MHRD*  
*K.J. Somaiya College of Engineering is in NIRF ranking position 150-200 by the Ministry of Human Resource and Development (MHRD) Government of India*
4. *Inclusive Interaction and Placement*  
*At K.J. Somaiya College of Engineering efforts are made with positive approach to broaden the sphere of Inclusive Education for differently-abled students by providing as many facilities as we can, because we understand that they have to compete with other students. They have to prove themselves that they are not different from others when it comes to technical competency in their selected branch of study.*
5. *International patents*  
*K. J. Somaiya College of Engineering is a proud possessor of a US patent.*
6. *Credit Transfer Facility*  
*Somaiya Vidyavihar is in process of signing MOU with many reputed National/International institutes and Universities. As the outcome of such MOUs, K. J. Somaiya College of Engineering may introduce provision for student exchange program. Efforts are also being taken to enable students 'to earn credit out of credit transfer policy.h*
7. *Autonomous Status*  
*Upon recommendations of UGC and the State Government, the University of Mumbai conferred the college with Autonomous Status from academic year 2014-15, whereby the college awards B. Tech / M. Tech. Degree on behalf of the University of Mumbai. It is the first self-financed Engineering College affiliated to the University of Mumbai to get Academic Autonomy.*
8. *Accreditation*  
*All undergraduate Programmes have been accredited by the National Board of Accreditation (NBA) multiple times. The College is now accredited by the National Assessment & Accreditation Council (NAAC) and awarded with 'A' grade from May 2017.*
9. *Infrastructure*  
*Latest state-of-art infrastructure in both academic and sports facilities.*
10. *Transparent Admission Process*  
*All Admissions are strictly based on merit and filled through State Common Entrance Test Cell/Directorate of Technical Education, Maharashtra State.*  
*Only vacant seats after all rounds of the State Common Entrance Test Cell/Directorate of Technical Education, Maharashtra State are filled at college level for each category. For these vacancy seats seats separate online applications are invited by the college and the admissions for such seats are also done strictly on merit through counselling round. The notification and online application link is made available on college website in admission link.*
11. *Strong Alumni*  
*Strong Alumni base of our college of 33 years and Somaiya Vidyavihar of over 50 years. Somaiya Vidyavihar has produced thousands of successful graduates contributing to various developments taking place all over the world.*
12. *Scholarships*  
*Various scholarships based on merit and merit-cum-need are offered to our students from the college, industries and with the support of faculty, staff and students of the college.*
13. *Placements*  
*KJSCE has almost 100% placement record*
14. *Library*  
*Library has around 41791 Volumes of Books, 153 eBooks, and subscription to 116 International and National journals / periodicals, including the on-line versions*
15. *Synergy*  
*Synergy of 35 Institutions from various disciplines*
16. *Vibrant Campus life*  
*Vibrant student activities with participation at National and International events.*
17. *Secure Campus*  
*Round the clock security and guarded environment in the campus.*

Our Founder, Padma Bhushan Shri K.J. Somaiya founded Somaiya Vidyavihar on the 9th of September 1959. He later founded the GirivanvasiPragatiMandal, the K. J. Somaiya Medical Trust, Girivanvasi Education Trust, and sister institutions to make great citizens of India and the world. In the words of Swami Vivekananda, "We want that education by which character is formed, strength of mind is increased, the intellect expanded, and by which one can stand on one's own feet." We have now grown into a multi-disciplinary and multi-campus educational institution.

Our motto is: "जानादेव तु कैवल्यम्।" meaning "Knowledge alone liberates". Education liberates from poverty, from hunger. Also liberates one from the attachments that bind us to small-mindedness. Knowledge provides the opportunity to make the life lived more meaningful. In the service of one's family, one's community, one's समाज, country, and indeed, the world. Bearing in mind that there is no religion other than the life lived in the service of humanity, "न मानुषात् परो धर्मः।" We will strive to provide access and opportunity to build a more inclusive society.

Our education in any subject will reflect its timeless fundamentals, its current context, and its applications. There is so much scientific discovery taking place, at the intersection of fields, of biology, computing, medicine, the social sciences and the rest. We will provide students and faculty with an environment to engage this world, to discover new truths and make new applications to create and share knowledge.

Our education will also be experiential. With projects that are 'real' and those that complement the learning inside the classroom. Our students and faculty will be at the cutting edge of change, to incubate companies, to create NGOs, and pursue any field of their passion.

Our education will also be holistic. Sports and physical exercise must be a firm part of the curriculum. For students to develop a love for sports, for recreation, for health, for teamwork, for competition.

Our education will also instill an appreciation for art and culture.

In the Bhagavad Gita, Arjun asks Krishna how is one to control one's mind that is as fleeting as the wind. Krishna responds that it can only be done through practice and discipline. "वैराग्येण तु कौन्तेय अभ्यासेन च गृह्यते" We will strive to teach our students to learn to stay calm in our turbulent world.

And our education will also include the ancient Indian tradition, its culture, its depth, and its knowledge. We must keep the connection with our mother tongue and our languages. Languages are storehouses of culture, and the loss of a language takes with it much learning, stored through it over the ages.

Finally, our education will help students lead a full life, to fall in love with life.

# Vision and Mission of KJSCE

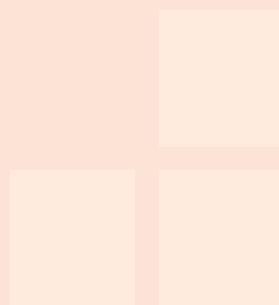


## *VISION*

*K.J. Somaiya College of Engineering envisages to become a World Class Centre of Learning in the field of Engineering Sciences where pursuit of Knowledge is leavened with Human Values of Courage and Compassion to produce Engineers in the service of Humanity.*

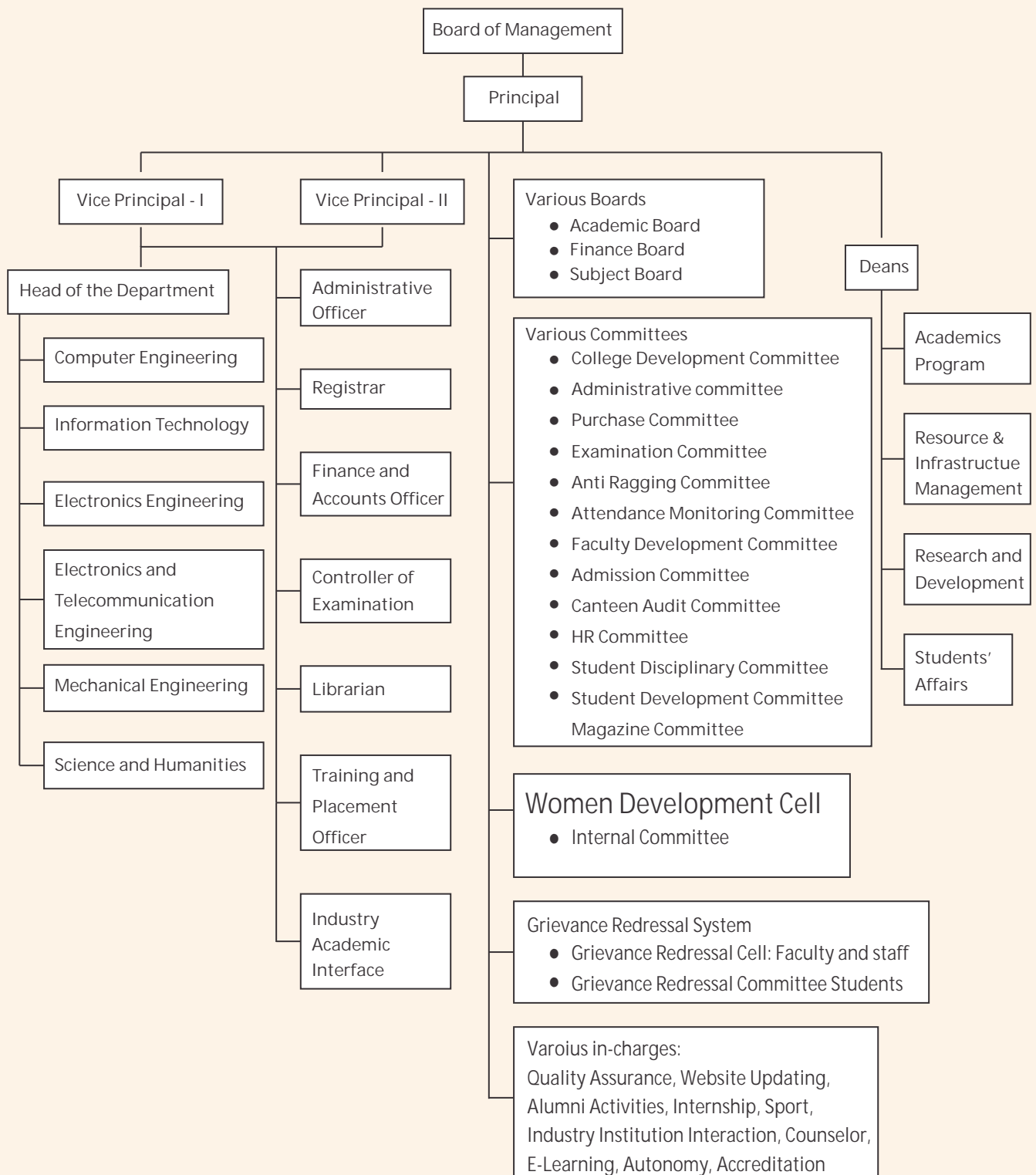
## *MISSION*

- ◆ *To be leading institution of learning in the field of Engineering Sciences with an activity engendered scholarly ambience, encouraging diversity of thought and expression.*
- ◆ *To provide an enabling environment for attaining excellence through an on-going dialogue with industry “ and bench marking ourselves with the best amongst peer institutions.*



# GOVERNANCE AND ORGANIZATION CHART

## Administrative Set Up/Organization Chart \*



\* Committees/boards are likely to change as per new guidelines of Maharashtra University Act 2016



# CONTENTS



Particulars		Page no.
1.	ABOUT SOMAIYA VIDYAVIHAR	13
	ABOUT K J SOMAIYA COLLEGE OF ENGINEERING	14
2.	PROGRAMMES OF STUDY	
	UNDERGRADUATE PROGRAMMES	15
	POST GRADUATE PROGRAMMES	15
	RESEARCH PROGRAMMES	15
3.	ADMISSION TO UNDERGRADUATE PROGRAMMES	16
4.	ADMISSION TO POST GRADUATE PROGRAMMES	17
5.	ADMISSION TO RESEARCH PROGRAMMES	17
6.	COLLEGE INFRASTRUCTURE	
	CENTRAL COMPUTING FACILITIES	18
	KJSCE COMPUTING INFRASTRUCTURE	19
	WORKSHOP	19
	LANGUAGE LABORATORY	20
7.	DEPARTMENT PROFILE	
	COMPUTER ENGINEERING	21
	ELECTRONICS ENGINEERING	22
	ELECTRONICS AND TELECOMMUNICATION ENGINEERING	23
	INFORMATION TECHNOLOGY	24
	MECHANICAL ENGINEERING	25
	SCIENCE AND HUMANITIES	26
8.	LIBRARY	27
9.	HOSTELS	28
10.	FEES AND OTHER CHARGES	29



# CONTENTS

	Particulars	Page no.
11.	PLACEMENT CELL	30
12.	EXAMINATION RULES AND REGULATIONS	33
13.	SCHOLARSHIPS	
	COLLEGE LEVEL	36
	PUSH	36
	INDUSTRIAL	34
14.	STUDENT ACTIVITIES	
	CO-CURRICULAR AND PROFESSIONAL SOCIETIES	37
	EXTRA CURRICULAR	37
	ENTREPRENEURSHIP CELL	41
	ALUMNI	41
15.	IMPORTANT INFORMATION FOR STUDENTS	
	AUTONOMY BENEFITS	42
	AUDIT COURSES	42
	INTERDISCIPLINARY COURSES	42
	PROCEDURE FOR BRANCH TRANSFER	42
	GENERAL INSTRUCTIONS FOR DISCIPLINE	43
	ANTI RAGGING	43
	GRIEVANCE REDRESSAL COMMITTEE	44
	WOMEN DEVELOPMENT CELL	44
	TRAVEL CONCESSION	44
16.	GLIMPSES OF VARIOUS ACTIVITIES OF <i>2017-18</i>	45
17.	<i>CONTACT INFORMATION</i>	46

# About Somaiya Vidyavihar



Padmabhushan Karamshi Jethabhai Somaiya founded Somaiya Vidyavihar, an education trust, in 1959, to provide quality holistic education. It was founded on the belief that, education is an important pillar of nation-building with the power to change lives, and that it is the duty of the privileged to help provide it to whoever aspires to be educated.

Somaiya Vidyavihar encompasses 34 institutions, with more than 39,000 students and 1,500 faculty. Its educational institutes are spread across two main campuses - a 50 acre complex in Vidyavihar and a 28 acre complex in Sion, both located in the heart of Mumbai besides a number of smaller campuses across rural Maharashtra, Karnataka and Gujarat. Currently we offer Degree, Diploma & Certificate courses at Undergraduate, Post Graduate and Doctoral levels. Somaiya Vidyavihar also runs a few autonomous Post-Graduate Courses, Vocational Training Courses and High Schools.

Somaiya Vidyavihar fosters an ecosystem that excels in education, research and service, a place where knowledge is preserved, disseminated and new knowledge is created. It is known as much for its Science, Technology, Medicine, Engineering, Management, Social Sciences and Commerce programs, as for its programs for academic studies in various Faiths and Cultures of India.

Shri. K.J. Somaiya guided Somaiya Vidyavihar until 1999, and his son Dr. S.K. Somaiya was at the helm of affairs till 2010. Today Shri. Samir Somaiya, a Cornell University and Harvard Business School, alumnus is the President.

Our motto ज्ञानादेवतुकैवल्यम् Knowledge alone liberates remains the bedrock, as we strive to expand and continuously innovate our education.

([www.somaiya.edu](http://www.somaiya.edu))



Athletics Track

# About K.J.Somaiya College of Engineering

*With a well-defined vision, dedicated leadership, requisite infrastructure, committed staff and versatile students, K J Somaiya College of Engineering (KJSCE) is one of the reputed and sought after college in Mumbai. Since inception, the college is committed to imparting good quality education to both undergraduate as well as post graduate students. This was observed and appreciated way back in 1997 when the Government of Maharashtra awarded 'A' grade to the college. The pursuit for excellence continues and is evident from the fact when all UG programmes were provisionally accredited for 2 years, by the National Board of Accreditation (NBA) New Delhi (valid up to November 2015). The College is now accredited by the National Assessment & Accreditation Council (NAAC) and awarded with 'A' grade from May 2017 for five years.*

*KJ Somaiya College of Engineering is in NIRF ranking position 150-200 by the Ministry of Human Resource and Development (MHRD) Government of India. Two teams of college won Smart India Hackathon as first runner-ups. The college has started inclusion education center for differently-abled students. Our students are participating in the Formula One Racing Car competition. student, Sanjana Dhulla, is the first Lady Car driver to participate in Formula Bharat Racing Car Competition. The college has started internship program and Student exchange program.*

*Further to it, the University of Mumbai has conferred Autonomous Status to our college from academic year 2014-15 after receiving appropriate recommendations from University Grant Commission (UGC) and Government of Maharashtra. In fact, we are very happy & proud to state that our college is the first self-financed Engineering College affiliated to the University of Mumbai to get this Academic Autonomous Status. Accordingly, from the year 2015 onwards, our college awards degrees to the students on behalf of the University of Mumbai.*

*The education in this institution is subtly leavened by human values. This realization dawns over them when the students leave from here after graduation. They realize that they have not only become engineers, but also have acquired profound human values of which they will always be proud. The college nurtures aspirations of students by mentoring and guiding them through an emphasis on knowledge and practical skills. Thus, the young students get transformed into global engineers who will become future architects of the world.*

*In a bid to supplement their education, the college also encourages its students to enrol for dual degrees and allows them to pursue two degree programmes simultaneously.*

*Our College has been listed at the 17th rank amongst top 150 engineering institutes in India and ranked 8th in top 100 private engineering institutes' rankings for the year 2018 in their survey 2018.*





## ❖ DEGREE (UG-Under Graduate) PROGRAMS OFFERED

The College offers four-year full-time Bachelor of Technology (B. Tech.) degree in the following 5 programs with an intake of 120 each:

- o Computer Engineering
- o Electronics Engineering
- o Electronics & Telecommunication Engineering
- o Information Technology
- o Mechanical Engineering

In addition, there is a provision of Direct Second year Engineering admission (DSE) of the degree program for students holding diploma (Lateral entry admissions). Twenty-four students who have passed diploma in appropriate branch of Engineering are admitted through lateral entry in each of the above mentioned UG programs.

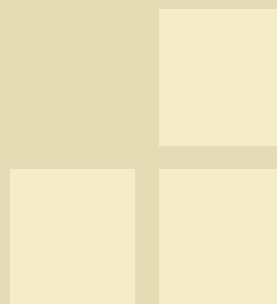
## ❖ PG (Post Graduate) PROGRAMS OFFERED

Our College also offers two-year full-time Master of Technology (M. Tech.) Programs with an intake of 18 each in:

- o Computer Engineering
- o Electronics Engineering
- o Electronics & Telecommunication Engineering
- o Information Technology (Specialization in Information Security)
- o Mechanical Engineering (Specialization in CAD/CAM & Robotics)
- o Mechanical Engineering (Specialization in Energy Engineering)

## ❖ RESEARCH PROGRAMMES OFFERED

Our college is a recognized Research Centre by the University of Mumbai offering Ph.D programme (Technology) in Electronics Engineering and Mechanical Engineering. Creation of a Research Centre for Computer Engineering is in process.



# ADMISSION TO UNDER-GRADUATE PROGRAMMES

## QUALIFYING EXAMINATION AND ELIGIBILITY:

*Eligibility conditions and requirements for admissions are as per rules of State Common Entrance Test Cell/Directorate of Technical Education, Maharashtra State.*

*Only vacant seats after all rounds of the State Common Entrance Test Cell/Directorate of Technical Education, Maharashtra State are filled at college level for each category. For these vacant seats separate online applications are invited by the college and the admission for such seats are also done strictly on merit through counselling round.*

- *Seat distribution for First Year Engineering (F. Y. B. TECH.)*

Sr. No.	Category	% of intake capacity	Seats per branch of 120 intake capacity
1	Gujarati Linguistic Minority seats	51 %	61
2	Institutional Quota (20%) These 24 seats are divided into two categories Institute level seats NRI seats	15% 5%	18 6
3	CAP seats	29 %	35
4	PIO/Foreign Nationals/Children of Indian workers in Gulf countries	Over and Above Intake	18 in Mechanical Engineering

- *Seat distribution at Second Year Engineering (S.E.)  
(Direct admission after Diploma)*

*i) Gujarati Linguistic Minority seats 13 per branch*

*These 13 seats per branch are distributed in proportion to number of applications received by the institute in the category of Annual pattern and Semester pattern.*

*ii) CAP Seats@ 11 per branch*

*These 11 seats per branch are distributed in proportion to number of applications received by the DTE in the category of Annual pattern and Semester pattern.*

*@ CAP Seats - Seats to be filled through Centralized Admission Process of CET cell, Maharashtra*



# ADMISSION TO POST - GRADUATE PROGRAMMES



*Eligibility conditions and requirements for admissions are as per rules of State Common Entrance Test Cell/Directorate of Technical Education, Maharashtra State.*

*Only vacant seats after all rounds of the State Common Entrance Test Cell/Directorate of Technical Education, Maharashtra State are filled at college level for each category.*

*For these vacant seats, separate online applications are invited by the college and the admission for such seats are also done strictly on merit through counselling round.*

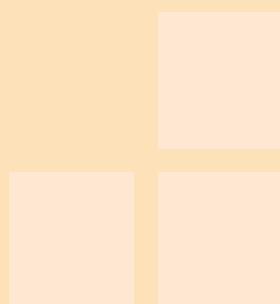
Seat distribution for M. Tech.

M. Tech. Specialization	CAP		Gujarati Linguistic Minority	Institute Level		Total Intake
				Non Sponsored (NS)	Sponsored (S)	
	(29%)	(51%)		(15%)	(5%)	
	(NS)	(S)				
Computer Engineering	4	1	9	3	1	18
Electronics Engineering	4	1	9	3	1	18
Electronics & Telecommunication Engineering	4	1	9	3	1	18
Mechanical Engineering with Specialization in CAD/CAM	4	1	9	3	1	18
Mechanical Engineering with Specialization in Energy Engineering	4	1	9	3	1	18
Information Technology with specialization in Information Security	4	1	9	3	1	18

## ADMISSION TO RESEARCH PROGRAMMES

### ELIGIBILITY

*The eligibility criteria are governed by the University of Mumbai (ordinances O.5473, O.5474 and O.5476.) A candidate, who satisfies these conditions, is eligible to seek admission and register for Ph.D. programme (Technology) in Electronics / Mechanical Engineering.*



# COLLEGE INFRASTRUCTURE

*The college is housed in two buildings. The main building, known as Aryabhat, has Ground + Four floors while the new building, known as Bhaskaracharya, has Ground + Six floors. Both the buildings have additional facilities which make them friendly even for the differently-abled. The college has an auditorium with seating capacity of 450 which is advantageous to conduct important academic presentations and to organize various events by students. In addition with this, every engineering department has a seminar hall with a seating capacity of approximately 150. All these seminar halls along with all the classrooms are equipped with modern projector facilities. The central and departmental libraries, and well-equipped state-of-art laboratories along with ample computing facilities are the pride of this college. Student amenities include an indoor badminton hall, and girls common rooms, and a well maintained spacious canteen facility caters needs of all students on college campus.*



## *CENTRAL COMPUTING FACILITIES*

- o KJSCE has a well-equipped Common Computing Facility (CCF). Students use this facility for surfing the internet for finding information relevant to their branch of study, listening to video lectures, checking results, online fee payments, appearing for online tests, etc.*
- o Moreover CCF assists the Training and Placement Cell and Administrative Department of the college for conducting campus placements and staff recruitment related activities e.g. registration for campus placement, conducting placement tests and interviews. This facility also comes in handy during the college admissions for online form submission and uploading of the testimonials.*



## *KJSCE COMPUTING INFRASTRUCTURE*

- o K.J. Somaiya College of Engineering has more than 1500 of desktops connected through a Local Area Network (LAN) comprising of 140 managed and 4 unmanaged switches.*
- o Every faculty member is provided with a separate laptop which is used by them for a more effective teaching process*
- o All the desktops are connected to an Internet Bandwidth of 155 Mbps (1:1)*
- o The KJSCE Local Area Network spans two buildings: Aryabhat and Bhaskaracharya. The subnets of the two buildings are connected through 10 Gbps single mode optical fiber media (10 Gbps fiber media is link aggregated 1:1).*
- o KJSCE campus is WiFi enabled. The WiFi connectivity is made available at all important places like boardrooms, UG-PG seminar halls, library, placement cell and common areas like corridors.*
- o The WiFi network is deployed using Aruba's controller-based WiFi solution and comprises 50 Access Points connected through Power on Ethernet (PoE) switches to KJSCE's network.*

## *WORKSHOP*

*Mechanical Engineering Department of college has well equipped laboratories and infrastructure to support UG and PG students. The workshop is an important part of the Mechanical Engineering Department. Spread in a large area it has various facilities like Computer Numerical Control (CNC) machine shop, Welding shop, Carpentry shop, Fitting shop, and Machine shop. All these shops have been established with a state-of-the-art technology. These shops help impart an up-to-date and advanced knowledge to the students. The students are well-equipped with the skills required to give consistent and best quality performance in their endeavours. The students sharpen their skills with hands on experience under the competent guidance of workshop staff.*

*Students are trained for computing, modeling skills and experience the shop floor environment to meet the recent needs of industries. The facilities are provided to develop the basic skills of students in handling various tools and understanding manufacturing processes. Students put into practice, their creativity and innovative ideas for model development. The final year students use the workshop facilities for their project work. The excellently equipped machines and equipments in the workshop enable students to sharpen their practical skills.*







## *LANGUAGE LAB*

*The language Laboratory was established in 2009 and is one of the most useful laboratories of the college. Since, its inception the Laboratory has played an important role in developing relevant modules in the specialized areas such as English Language Teaching and Learning, Developing Proficiency in Basic and Professional skills in English, Spoken English, English for Special Purposes, Technical writing and Research Documentation.*

*The Laboratory is now aiming at projecting itself as a Centre for Training and Developing Human Resource. It introduced two specialized courses for developing Proficiency in Basic English Skills and Professional Communication Skills of the college staff and students.*

*The Laboratory is proposing to have its own a Library-cum-Media Centre, an Audio-Visual Room and a Group Discussion room for conducting the specialized courses smoothly.*

## *Activities of the Laboratory:*

- a) Courses for the Non-teaching Staff*
- b) Courses for the Teaching Staff*
- c) Activities for the Students*
- d) Activities for the Staff and the Students*

# DEPARTMENT PROFILES



## *COMPUTER ENGINEERING*

*Department: Computer Engineering*

### *Department Summary*

The department of Computer Engineering aims at providing in-depth technical knowledge and opportunities for innovation and research with updated computer facilities. It facilitates students to apply computer science technology and principles across a wide variety of fields, for adapting to ever changing multi disciplinary converging technology. Leadership and teamwork are induced for imbuing the ethical & professional attitude to enrich society.

### *Vision*

*To become a center of excellence in the discipline of Computer Engineering for developing technically adept professionals with ethical and leadership qualities in service of society.*

### *Mission*

- ♦ *Provide sound technical foundation in Computer Engineering through comprehensive curriculum and application oriented learning.*
- ♦ *Provide ambience for professional growth and lifelong learning for adapting to challenges in rapidly changing technology.*
- ♦ *Inculcate social and ethical values and leadership*

### *Thrust Areas*

- o *Intelligent System & Data Processing*
- o *Image Analysis & Interpretation*
- o *Networking System & Security*
- o *System & Software Engineering*

### *Laboratories*

- o *Devices and Communication*
- o *Object Oriented Analysis and Design*
- o *Computer Programming*
- o *Web Technology*
- o *Database Management System*
- o *Multimedia Systems*
- o *Microprocessors*
- o *System Security*
- o *Project Lab*
- o *PG Computing Facility*
- o *Analysis of Algorithms*
- o *Artificial Intelligence and Robotics*
- o *Computer Communications and Networking*





## *ELECTRONICS ENGINEERING*

### *Department Summary*

*Electronics is a very broad field that encompasses many subfields including those that deal with electronic devices, Robotics, Signal processing, Embedded systems, Power electronics, etc. Due to the rapid evolution in all the above fields, engineers are required to possess proficiency in both their hardware and software elements. Our courses prepare graduates to access a full range of careers available in technology that have electronics as the core and their application for for the betterment of mankind.*

### *Vision:*

*To impart excellent quality-education by keeping pace with rapidly changing technologies and to create technical manpower of global standards with ethical and social values.*

### *Mission:*

*Efforts to impart quality and value based education to*

- ◆ *Raise satisfaction level of all stakeholders*
- ◆ *Create competent professionals*
- ◆ *Provide all possible support to promote research and development activities.*

### *Thrust Areas*

- o *VLSI*
- o *Embedded System*
- o *Control and Automation*
- o *Signal Processing*
- o *Communication Engineering*

### *Laboratories*

- o *Circuits Lab*
- o *Microprocessor*
- o *Basic Communication Lab*
- o *Electrical Engineering Lab*
- o *Signal Processing Lab*
- o *Digital System Design Lab*
- o *Project Lab*
- o *Power Electronics Lab*
- o *Image Processing Lab*
- o *Robotics Lab*
- o *Control & Instrumentation Lab*
- o *VLSI Lab*
- o *PCB Lab*
- o *Research Center*
- o *PG Lab*





*Located in the Bhaskaracharya building, the college library aims to cater to the needs of students and faculty members. The Library is kept open from 9:30 a.m. to 9:00 p.m. on all working days. During examinations additional reading facilities are also provided.*

## *Infrastructure*

- o Around 41791 Volumes of Text Books, Reference Books, Hand Books, Standards and Back-volumes.*
- o 153 eBooks and 6 Kindle eBook Readers.*
- o WiFi facility in all sections.*
- o Separate periodical section for academic research and up-to-date information.*
- o Subscription to 116 International and National Journals/Periodicals including the online versions.*
- o Collection of 3554 CDs, 7 e-Journal databases*
- o GATE Software availability through network*
- o TURNITIN – licensed Antiplagiarism software available for students / faculty members*
- o Access to IIT Bombay Central Library*
- o Access to Developing Library Network (DELNET)*
- o NPTEL Video lectures given by IIT faculty members available on library servers*

## *Initiatives*

- o The library organizes User awareness, Orientation and Information Literacy drives for the “ benefit of new students in the beginning of the academic year.*
- o The Book Bank Scheme benefits the downtrodden and under-privileged students by providing them to borrow books for whole academic year.*
- o Photocopying machine within the library*

## *User Friendly access*

- o Real time Web-OPAC helps users to locate books and other resources from library portal with a facility of self-renewing and reserving books.*
- o EBSCO Discovery Service provides a unified platform for users to access and search from all the library resources to get a single set of results like Google.*
- o RemoteXs service helps users to access all e-resources remotely.*





## *ELECTRONICS AND TELECOMMUNICATION ENGINEERING*

### *Department Summary*

*Electronics & Telecommunication Engineering aims to develop skills and deepen knowledge of the basic concepts and theories in the field of Signal Processing, RF and Microwave communication, Networking, Embedded systems, VLSI, etc. It has been instrumental in producing quality engineers of global standards with capabilities of facing new challenges in the Telecommunication field.*

### *Vision:*

*To become a center of excellence for creating competent engineers with evolving technical skills, and leadership qualities with human values to pursue excellence in professional field.*

### *Mission:*

- ◆ *Providing quality education to*
- ◆ *Develop technical skills, soft skills and professional ethics to cater the needs of industry.*
- ◆ *Promote research and creativity in Engineering and technology.*
- ◆ *Inculcate awareness towards societal needs and environmental issues.*

### *Thrust Areas*

- o *Signal Processing*
- o *Microwave and antennas*
- o *Communication systems*
- o *Microprocessors and Embedded systems*
- o *Circuits and VLSI*

### *Laboratories*

- o *Integrated Circuits Lab*
- o *Optical Fiber Communication Lab*
- o *Antenna Lab*
- o *Wireless Communication Lab*
- o *Communication Engineering Lab*
- o *PCB Lab*
- o *Project Lab*
- o *Software Simulation Lab*
- o *Microwave Lab*
- o *Basic Electricity and Electrical Engineering Lab*
- o *Instrumentation and Control Systems Lab*
- o *Digital Signal Processing Lab*
- o *Circuits Lab*
- o *Microprocessor Lab*





## *INFORMATION TECHNOLOGY*

### *Department Summary*

*Information Technology (IT) is an an engineering division, which concentrates on the study of utilizing computers and telecommunications in order to control, gather, store and circulate information. The Department of Information Technology aims at strengthening and preparing students for lifelong learning, Research and successful adaptation of ever-changing technology, which helps them to develop an ability to analyze, design and provide novel IT solutions for engineering problems. We also focus on building appropriate professional attitudes, ethics and social concern among students.*

### *Vision*

*To become a center of excellence for holistic education by preparing world class professionals in the dynamic field of Information Technology.*

### *Mission*

*Providing quality education to*

- ◆ *Develop competent IT professionals with ethical values and enable them in lifelong learning.*
- ◆ *Promote conducive ambience for research and creativity.*

### *Thrust Areas*

- o *Network and Security*
- o *Knowledge based systems*
- o *Information Management*
- o *Application Development*

### *Laboratories*

- o *Computer Programming*
- o *Embedded System*
- o *Software Engineering*
- o *Modeling & Simulation*
- o *Analog & Digital Communication*
- o *Information Security*
- o *Project*
- o *High Performance Computing*
- o *Advanced Database Management System*
- o *Analysis & Design*
- o *Image Processing*
- o *Operating System*
- o *PG Computing Center*



# DEPARTMENT PROFILES



## *MECHANICAL ENGINEERING*

### *Department Summary*

*Mechanical engineering department imparts skills and expertise in the areas of design, manufacturing and thermal sciences that make most of the sectors of the industry. The department encourages research, development and innovation through activities such as design and fabrication of robots (Team ROBOCON and the Marine Robotic Team), racing cars (Team Orion), all-terrain vehicles (Team Redshift), fuel-efficient cars (Team Eta) and remote-controlled model aircrafts (Team Onyx).*

### *Vision:*

*To become a programme of world repute in the field of Mechanical Engineering, known for an ambience conducive to value based multifarious development of students, enabling them to face technological challenges for service of the mankind.*

### *Mission:*

- ◆ *To impart skills and expertise in design, manufacturing and thermal areas of mechanical engineering that is the backbone of industry, so that the students thrive as successful engineers.*
- ◆ *To provide an opportunity to create, interpret, apply and disseminate knowledge to improve the quality of life.*

### *Thrust Areas*

- o *Thermal and Fluids*
- o *Design*
- o *Manufacturing and Allied*

### *Laboratories*

- o *Automobile System*
- o *CAD/CAM*
- o *Computer Graphics*
- o *CNC*
- o *Engineering Metallurgy*
- o *Engineering Mechanics*
- o *Fluid Mechanics*
- o *Hydraulic Machinery*
- o *Heat and Mass Transfer*
- o *Internal Combustion Engines*
- o *Mechatronics*
- o *Mechanical Measurements and Metrology*
- o *Refrigeration & Air conditioning*
- o *Renewable Energy*
- o *Strength Of Materials*
- o *Theory of Machinery*
- o *Workshop*
- o *BETiC (Biomedical engineering and Technology incubation Centre)*
- o *PG Computer Centre*





## *SCIENCE & HUMANITIES*

### *Department Summary*

*The Department of Science and Humanities was established with intent to impart the applied Scientific and Humanistic knowledge of cluster subjects such as Applied Physics, Applied Mathematics, Applied Chemistry, Communication Skills and Environmental Studies to the graduate students of all engineering disciplines. The department engages broadly with the study of all these applied courses to provide a sound platform for the budding engineers to pursue their Engineering Programmes successfully. Through its applied courses, the department prepares the students with the innovativethinking, problem solving skills, communication skills, leadership skills, an ability to adapt to changing conditions, and inquisitiveness for lifelong learning.*

### *Laboratories*

- o Applied Physics*
- o Applied Chemistry*
- o Language Laboratory*



# HOSTEL

*Limited accommodation is available for boys and girls in two hostels on the campus of Somaiya Vidyavihar. The students from outside Mumbai jurisdiction are given the hostel accommodation on priority basis. Currently, more than 150 students of our college are availing this facility.*

*Hostel - 1*



*Hostel - 2*

*Hostel-2 offers facilities such as attached toilet, 24 hours hot water, internet facility in each room, etc.*



*Hostel - 3  
Maitri*





# FEES



## *TUITION AND OTHER FEES*

*The Adhoc/Interim fees structure is approved by the Competent Authority of Government of Maharashtra. The final fee approved and published by the Competent Authority for that year is the fee payable by all candidates admitted for that academic year.*



## PLACEMENT CELL

Many reputed Companies from the city and outside have been regularly visiting this College for Campus Recruitment. On an average, about 90% of our graduates receive an offer during their final year. Total 497 (including PG: 7 offers) jobs offered till 14th May, 2018 for the final year UG/PG students passing in July 2018.

*IMPORTANT: The eligibility criteria for placement vary for different companies. The placement activity usually happens when students are studying in their Semester VII. The companies prefer students with good academic performance from Semester I to VII and with no backlogs at the time of appearing for interviews. The students are advised to maintain good academic performance throughout for better placement prospects.*

Name of the 75 Companies visited during the academic year 2017-18 (UG + PG)

<ul style="list-style-type: none"> <li>◆ Jaro Education</li> <li>◆ Stellar Value Chain</li> <li>◆ Eleation (Mech)</li> <li>◆ Barclays</li> <li>◆ Morgan Stanley</li> </ul>	<ul style="list-style-type: none"> <li>◆ Oracle</li> <li>◆ Voltas</li> <li>◆ Pharomeasy</li> <li>◆ ZS Associates</li> <li>◆ Bank of America</li> </ul>	<ul style="list-style-type: none"> <li>◆ Kongo Educational Services Pvt Ltd</li> <li>◆ Build Track</li> <li>◆ ELEATION</li> <li>◆ Friction Innovative</li> </ul>
<ul style="list-style-type: none"> <li>◆ Indus Valley Partner</li> <li>◆ JPMC (J.P. Morgan Chase Co. Ltd.)</li> <li>◆ Media.net</li> <li>◆ Accolite</li> </ul>	<ul style="list-style-type: none"> <li>◆ Half Tick</li> <li>◆ Research wire</li> <li>◆ Godrej &amp; Boyce Mfg. Ltd</li> <li>◆ IFB Industries</li> </ul>	<ul style="list-style-type: none"> <li>◆ Wisdm Labs</li> <li>◆ ICICI Pru Life</li> <li>◆ Grindwell Norton</li> <li>◆ Aakash Institute</li> <li>◆ Dynalog Enterprises</li> </ul>
<ul style="list-style-type: none"> <li>◆ Wissen Technology</li> <li>◆ Accenture</li> <li>◆ L &amp; T Infotech</li> <li>◆ Seclore Technology</li> <li>◆ Interactive brokers</li> <li>◆ Capgemini</li> </ul>	<ul style="list-style-type: none"> <li>◆ Jacobs</li> <li>◆ Cartesian Consulting</li> <li>◆ Sanmar Group</li> <li>◆ Vision Mechatronics</li> <li>◆ Blue Star</li> <li>◆ Toyo Engineering</li> </ul>	<ul style="list-style-type: none"> <li>◆ CAFÉ Coffee Day Beverages</li> <li>◆ Reliance Jio</li> <li>◆ Ahdityaa Enterprises</li> <li>◆ Mitr Learning</li> <li>◆ Tranzact Pvt Ltd</li> </ul>
<ul style="list-style-type: none"> <li>◆ Dolat Capital</li> <li>◆ Yodlee (Pool Campus)</li> <li>◆ Microsoft</li> <li>◆ Reliance Industries</li> <li>◆ Majesco</li> <li>◆ Mastek</li> </ul>	<ul style="list-style-type: none"> <li>◆ (Think &amp; Learn) Byju's</li> <li>◆ Daikin Air Conditioning</li> <li>◆ Tata Communications Ltd.</li> <li>◆ Lite Technologies</li> <li>◆ Hourglass Research</li> </ul>	<ul style="list-style-type: none"> <li>◆ JRE Pvt Ltd</li> <li>◆ Logixal</li> <li>◆ Indusgeeks</li> <li>◆ Avanti Fellows - Hiring Teachers</li> <li>◆ FRAPPE TECHNOLOGIES</li> </ul>
<ul style="list-style-type: none"> <li>◆ NSEIT</li> <li>◆ Atos India Pvt.Limited (Pool Campus)</li> <li>◆ Vphrase</li> <li>◆ Colgate</li> <li>◆ Convonix</li> </ul>	<ul style="list-style-type: none"> <li>◆ Express Global Logistics Pvt. Ltd.</li> <li>◆ Neosoft Technologies</li> <li>◆ Think Analytics</li> <li>◆ Rave Technologies Pvt. Limited</li> <li>◆ Indus Momentus</li> </ul>	<ul style="list-style-type: none"> <li>◆ HUGHES</li> <li>◆ Irobokid</li> <li>◆ eMeasurematics</li> <li>◆ Germin8</li> <li>◆ Sportz Interactive</li> </ul>

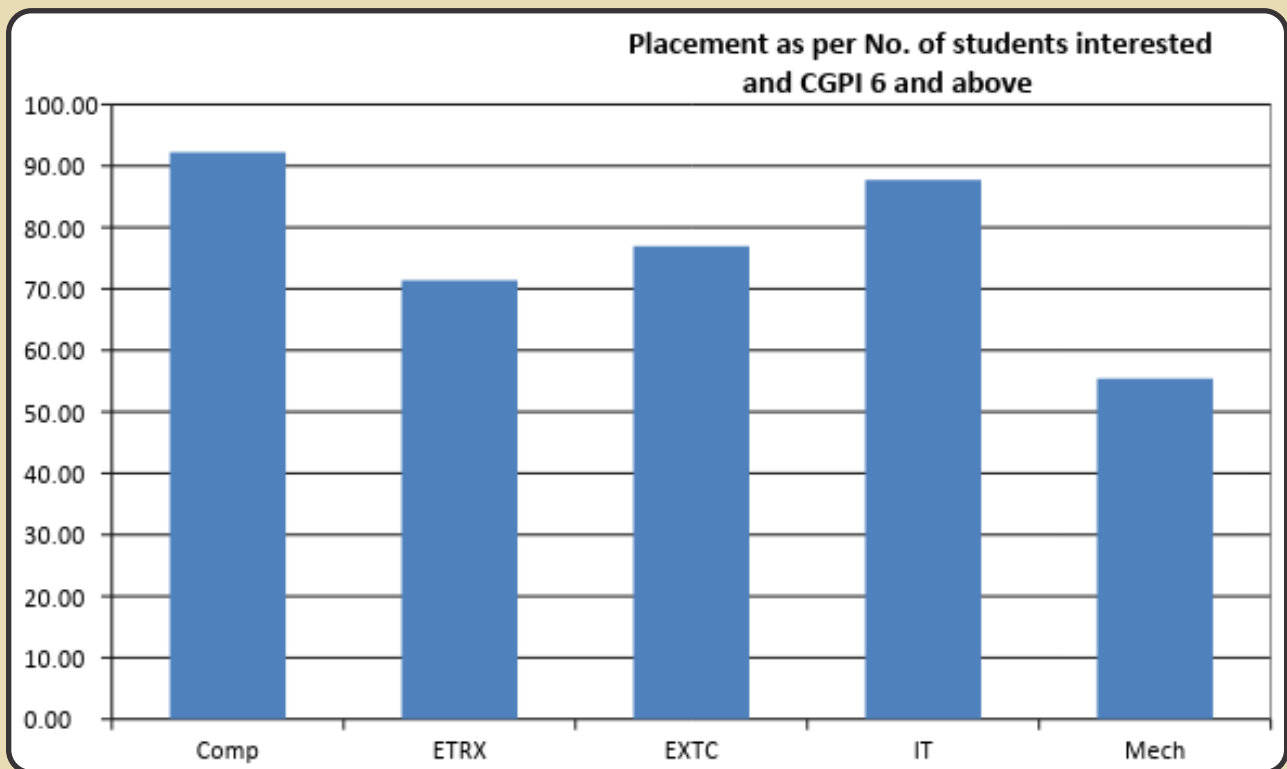
# PLACEMENT CELL



## Summary of Placements and Job offers for academic year 2017-18\* (UG)

<i>% of Placement</i>							
	<i>COMP</i>	<i>ETRX</i>	<i>EXTC</i>	<i>IT</i>	<i>MECH</i>	<i>Institute Total</i>	<i>Institute %</i>
<i>No of students as per Roll Call List</i>	145	130	147	154	152	728	56.04
<i>Placed students</i>	95	60	90	107	56	408	
<i>%</i>	65.52	46.15	61.22	69.48	36.84		
<i>No. of students placed + Interested in placement</i>	103	94	119	125	107	548	74.45
<i>%</i>	92.23	63.83	75.63	85.60	52.34		
<i>No. of students interested 6 and above CGPI</i>	103	84	117	122	101	527	77.42
<i>Placement as per no. of students interested 6 and above CGPI %</i>	92.23	71.43	76.92	87.70	55.45		
<i>Total Offers</i>	122	71	104	130	63	490	

*\*Information as on 14th May, 2018*



*Summary of Placements and Job offers for academic year 2017-17\**

*\*Information as of 14<sup>th</sup> May 2018*





# EXAMINATION RULES AND REGULATIONS



*The college being autonomous conducts examination on behalf of the University of Mumbai. The college awards B. Tech / M. Tech. Degrees on behalf of the University of Mumbai.*

- o The grading system followed for evaluation is credit based grading system with absolute grades.*
- o Credits are said to be earned when a student passes a course.*
- o Eligibility criterion for next academic year is based on % of credits earned rather than number of heads of passing. Fractional credits earned are rounded off by truncating it to lower integer.*
- o Apart from earning the credits in his/her core programme, a student has to enroll for one exposure course in the first year of his/her UG programme. The student has to complete three audit courses from his/her semester III to semester VI of UG programme.*

## *1. Letter Grade and Grade Point Allocation*

*In every course, based on the performance in assessments, the student is awarded a letter grade as per the grade table. These letter grades not only indicate a qualitative assessment of the student's performance but also carry a quantitative (numeric) equivalent called the Grade Point.*

## *2. Regular Examination*

*Any student keeping terms for a particular semester and subsequently appearing for end semester examination conducted by college, this examination is treated as regular examination for that student. Regular Examination for Odd term is held in November - December and for Even term is held in April - May every year.*

## *3. Backlog Examination*

*Any student who does not pass any course(s) or remains absent in regular examination when appearing for such course(s) in subsequent semester conducted by college such examination is treated as backlog examination for that student.*

## *4. Course Evaluation Scheme*

### *Theory/On screen Examination*

- The evaluation of a student for each course is based on his/her performance in End Semester Examination (ESE) and Continuous Assessment (CA), taken together. The CA component consists of Test-1 (T-1), Test-2 (T-2) and IA (Internal Assessment).*

## *5. Grades awarded for Regular examination and for Backlog Examination*

*In CBGS system, the Letter Grades are awarded to the total marks obtained by student for each course including Theory / OR / PR / TW.*

*For Backlog Examination, Student has Grade Penalty.*

*There are two separate grade tables - one for regular examination and other for backlog Examination.*

## *6. Semester Grade Performance Index (SGPI)*

$$SGPI = \frac{\sum_{i=1}^n C_i * G_i}{\sum_{i=1}^n C_i}$$

*C<sub>i</sub> = Credit assigned to <sup>i</sup>th course and G<sub>i</sub> = Grade Points earned for <sup>i</sup>th course of that semester*



# EXAMINATION RULES AND REGULATIONS

## 7. Yearly Performance Index (YPI) for an academic year

$$YP/YPI = \frac{\sum_{i=1}^n C_i * G_i \text{ (of odd semester)} + \sum_{i=1}^n C_i * G_i \text{ (of even semester)}}{\sum_{i=1}^n C_i \text{ of odd semester} + \sum_{i=1}^n C_i \text{ of even semester}}$$

## 8. Cumulative Grade Performance Index (CGPI)

For those admitted to first year (FE) prior to July 2014

$$CGPI = \frac{\sum_{j=1}^m (C * G)_j}{\sum_{j=1}^m C_j}$$

$C * G$  = Product of Credits \* grades of  $j$ th semester,  $j$  varies from 1 to 8 i.e.  $m_{\text{maximum}}=8$

For those admitted to second year (SE) in July 2014

$$CGPI = \frac{\sum_{j=3}^m (C * G)_j}{\sum_{j=3}^m C_j}$$

Here  $j$  varies from 3 to 8 i.e.  $m_{\text{maximum}}=8$

## 9. Grade Improvement and Performance Improvement

Under this scheme student can re-appear for any course or for entire semester which he/she has already passed in order to improve grades obtained by him/her in respective course(s). However facility of grade improvement and performance improvement is at present available only in final year of B. Tech./ B.E. As and when this facility is made available in FY to TY it will be notified by a separate notice. In both these cases grade table of regular examination will be applicable.

## 10. Repeat Examination

Repeater Examination for benefit of students who fail only at B. Tech Semester VIII and M. Tech Sem II is held within a month of the results declaration of Regular examination. By appearing for this repeat examination the students need not wait for next backlog examination and thereby complete their programme earlier.

## 11. Open Day

After the assessment, all answer books of ESE (End Semester Examination) are decoded and de-masked and the mark list is prepared. These assessed answer books of ESE are shown to students in class on open day and all types of queries of students are settled by proper procedure.

## 12. Eligibility Criteria for Admission to Subsequent Higher Year

Minimum 60% credits of the total credits should be earned to become eligible for admission to subsequent year.

### Eligibility Criteria for Admission to Second Year (SY)

Minimum 60% credits of the total credits of First Year should be earned to become eligible for

# EXAMINATION RULES AND REGULATIONS



*taking admission to Second Year.*

*Eligibility Criteria for Admission to Third Year (TY)*

*All credits of First Year should be earned*

*and*

*Minimum 60% credits of the total credits of Second Year should be earned to become eligible for taking admission to Third Year.*

*Eligibility Criteria for Final/Last Year (LY)*

*All credits of First Year should be earned*

*and*

*All credits of Second Year should be earned*

*and*

*Minimum 60% credits of the total credits of Third Year should be earned to become eligible for taking admission to Final Year*

*Eligibility Criteria for admission to even semester*

*Odd term / semester of respective year (FY/SY/TY/LY) wherein student has enrolled must have been granted i.e. Semester 1, 3, 5 & 7 must have been granted to become eligible for enrolment to even term / semesters 2, 4, 6 & 8 respectively.*





# SCHOLARSHIPS

## *KJSCE Scholarship*

*The college offers Need-cum-Merit Scholarship in the form of 50% tuition fee waiver to Five students whose annual family income is less than Rs 4.5 Lacks, Three students from Electronics Engg and Two students from Information Technology who are admitted in the round 1 of any of the CAP/ ILS/ Minority rounds will be eligible to apply. These students will continue to get this benefit throughout the 4 years of their degree. Application Form is available in college office.*

## *PUSH- KJSCE*

*(For financially weak students)*

*There are many students who are financially weak and unable to pay their regular college fees. The faculty, staff members and students of college have initiated a forum named People United for Student's Help, K.J. Somaiya College of Engineering (PUSH-KJSCE). This forum is intended to offer a helping hand to these well-deserved and needy students.*

## *JSW foundation scholarship*

*The Foundation supports meritorious students who need financial support through scholarships so that they can pursue their academic goals.*

## *MOHAN T. ADVANI Centennial Scholarship by Blue Star*

*The objective of this scholarship is to support economically challenged but academically deserving undergraduate students to pursue a professional degree of their liking and capability and prepare them in a holistic manner for future work life. These are available to students who have opted for Mechanical/Electronics Engineering. The scholarship is provided to meet part of the tuition fees.*

## *Narotam Sekhsaria Foundation Scholarship programmer for Undergraduate Studies in Engineering*

- ◆ *Excellence awards and Certificates of Merit*
- ◆ *Merit-cum-means scholarship up to maximum Rs. 50,000/-*

## *J. R. D. Tata Scholarships*

*Scholarships to meritorious students to pursue higher and professional studies in our college*

## *Khetawat Scholarship*

*Scholarship sponsored by our alumnus, Mr. Swadesh Khetawat*

## *CET highest score prize*

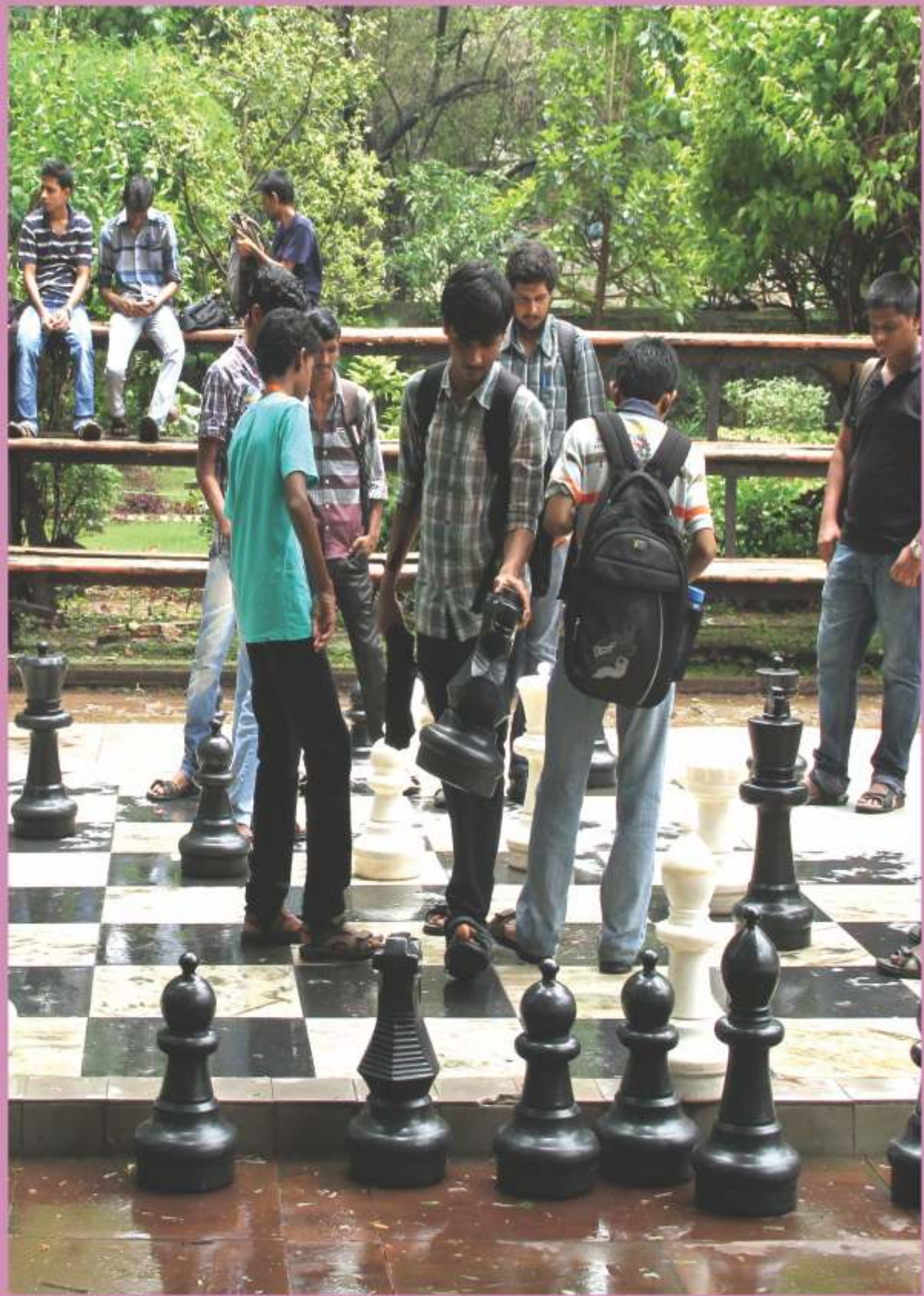
*Cash Prize by college to CET toppers of each programme.*

## *Need-cum-Merit Scholarship*

*Need-cum-merit scholarship is offered by the college to three students of Electronics Engineering and two students of Information technology programme*



# STUDENT ACTIVITIES



## CO-CURRICULAR AND PROFESSIONAL SOCIETIES

### *KJSCE Students Council*

*The KJSCE Students' Council is the highest student body of KJSCE which represents the students of the college. This team of 29 members works throughout the year for organizing events like Freshers' Eve, Big Somaiya Debate, Abhyantriki, Skream, Symphony, KJSCE Shield, Garba Eve, Final Year Farewell, Naari, Ubiquitous, etc. The body also works for Parvaah- the social initiative of KJSCE.*

*Get in touch with the Students' Council:*

*Facebook: <https://www.facebook.com/kjscestudentscouncil/>*

*KJSCE Live App:*

*[https://play.google.com/store/apps/details?id=org.kjscesymphony.enzo.kjscelive&hl=en\\_INCO](https://play.google.com/store/apps/details?id=org.kjscesymphony.enzo.kjscelive&hl=en_INCO)*

### *Abhyantriki*

*This is a forum for students to be innovative in paper presentation, robotics competitions, gaming arenas, project competitions, debates, etc. and visit project exhibitions and technical exhibition by government organisations, such as ISRO, DRDO, BARC, etc. Every year, around 50 engineering colleges and 10,000 students visit the festival. Abhyantriki has established itself as one of the finest technical festivals of the Mumbai.*

*Visit: [www.kjsce-abhyantriki.org](http://www.kjsce-abhyantriki.org)*

### *Kshitij*

*Kshitij is an annual magazine of K.J. Somaiya College of Engineering. This magazine is an attempt to provide the students a platform to reveal their ideas and hidden talents. The students' choice of articles ranges from a very scholarly exploration of ideas as per the student's intellectual curiosity, to a few techniques for aiding personality development and general issues.*

*Visit: <https://issuu.com/kjscekshitij>*

### *Sports*

*Apart from annual sports events organized for students and staff, we also provide facilities such as indoor badminton court, table tennis, carom boards, and chess-boards. Well-equipped gymkhana and playgrounds on campus encourage our students to be better sports persons. The college also has teams for various sports including football, basketball, athletics, chess, table tennis, volleyball, kho kho, kabaddi, throwball, badminton, and cricket.*

### *Skream*

*Skream, the national level sports festival of KJSCE, has gained its popularity in most of the colleges across India. Every year, the students organize 14 different sports competitions along with some workshops. The festival receives the overall participation of about 3000 students from all over India. The main aim is to promote the importance of sports in students life.*

*Visit: [www.kjsce-skream.org](http://www.kjsce-skream.org)*

### *Symphony*

*Symphony, the inter-collegiate cultural festival of KJSCE, has gained its name and popularity among Engineering and Management institutes under Mumbai University for the last decade. Every year about 75 institutes and 10000 students visit the programme. The main aim is to promote, encourage and exhibit the talents of the students on a common platform and create interest in the classical, vocal and instrumental music.*

*Visit: [www.kjsce-symphony.org](http://www.kjsce-symphony.org)*



# STUDENT ACTIVITIES



## *Parvaah*

*Parvaah, the social initiative of KJSCE, works for various causes and events like Womens' Safety, Visit to Old Age Home, Signal Shala for Children, Beautification of Ghatkopar station, Versova Beach Cleanup and support of LGBT people. Every year, the Students' Council takes up a new initiative and works towards the initiative for the betterment of the society.*

## *CSI*

*A Computer Society of India Students' chapter functions in the college. Through this chapter various activities such as conferences, conventions, and lectures are organised. Regular training workshops by IT professionals for skill upgradation are also organised.*

*A CSI students' council is formed from the student members every year. They work under the guidance of teachers. There are a number of technical as well as non-technical activities conducted by it, which includes paper presentation, project competitions, technical talks on the latest trends in industry, etc. The students participate in and organize events.*

## *EESA*

*A campus chapter of the Electronics Engineers Students' Association is formed in the college. The association promotes activities such as paper presentations, quizzes, seminars, etc. It arranges for preparatory guidance lectures and also conducts mock tests and group discussions for CAT, GRE, etc.*

## *IEEE*

*A campus chapter of the IEEE functions in the college. The Institute of Electrical and Electronics Engineers is the world's largest technical professional society. It promotes the development and application of electrotechnology and allied sciences for the benefit of humanity, the advancement of the profession, and the well-being of its members. The IEEE fosters the development of standards that often become national and international standards. The council of the K.J. Somaiya chapter of IEEE is committed to opening high quality, informative and technologically enriching avenues for expanding the members' horizons by organizing visits to cutting edge industries, seminars, competitions and forums.*

## *IETE*

*The Institute of Electronics & Telecommunication Engineers- Institute Students' Forum, (IETE – KJSISF), existing since 2001, is a student organization established with an aim to provide students with opportunities for all round development and make them "ENGINEERS" in the real*



# STUDENT ACTIVITIES

*sense of the term.*

## *ISTE*

*The ISTE Student Chapter (MH 60) – The Indian Society for Technical Education Chapter MH 60 is the largest association in college as all the students of all departments are members of this chapter. One of the major objectives of the ISTE is to assist and to contribute to the production and development of top quality professional engineers and technicians needed by the industries and other organisations.*

*The council of KJSCE chapter organizes various technical events for overall development of students throughout year including ‘Prakalpa’ a state level project completion.*

## *MESA*

*The Mechanical Engineering Students’ Association, was founded in the year 2000. It is an organization which conducts technical events, seminars and industrial visits all-round the year, making aspiring mechanical engineers more competent, active and perceptive and also gives them an insight into the field of study, research and development.*

*G-Force, the annual tech fest held by MESA serves as an opportunity for students to showcase their talents and technical skills.*

## *SAE*

*The Society of Automotive Engineers is a non-profit educational and scientific organization. This society is concerned with the development of reference standards, technical data and advancement of technology for the field of mobility vehicle systems ranging from a two wheeled motorcycle to the rocket engine propelled space crafts and is a widely accepted standards Institution in the transportation and mechanical engineering field.*

*SAE-KJSCE is a collegiate chapter of this parent organization, started in our college. Since its establishment in our college, the club is very well-received by the college students from KJSCE as well as by other college students. It presently has a member base of around 300 members who actively participate in all the aspects of organizing various student centric programmes. The club has been very instrumental in developing student–industry relationships; with these supporters further helping us in developing our student projects and organizing better activities. By organizing events like engine workshops, aeromodelling workshops, seminars on learning various CAD soft wares and Industrial visits to automotive manufacturers like TATA, Mahindra, etc. Our club has instilled and imbibed in our club members a culture to seek knowledge and accomplish. Strictly following our Club’s motto we... “Strive, Achieve, Excel*



# Entrepreneurship Cell And Alumni



## *Entrepreneurship Cell*

*BloomBox is the entrepreneurship cell at K.J. Somaiya College of Engineering. We believe that engineers harbour a latent potential to be the employment generators of tomorrow, pioneering technological and economic growth of the country.*

*BloomBox is intended as a platform to motivate and educate students about entrepreneurship and encourage them to flesh out their ideas in business terms and form global enterprises that combine technology, vision and business acumen. Our aim is to channelize our efforts towards spreading knowledge and inculcating enthusiasm amongst the students by altering their perspective of business in a manner that they shall cherish and shall remain etched in their memory.*

*BloomBox hosts a gamut of activities every year which challenge the brightest of minds to push their capacity to ideate, drive their hunger to innovate and challenge their potential to create like never before. BloomBox is all set to make students tingle their grey cells and touch new horizons of ingenuity and innovation.*

## ❖ *ALUMNI*

*Association of Somaiya Engineering College Alumni [ASECA]*

*"We strive to engage all our alumni for life, build a culture, to enhance their business ties and networks among the KJSCE family. We are working on the goals of building a connect, setting up process and showing distinct values"  
Reconnect... Revive... Celebrate...*

## *Alumni Cell*

### *Objectives*

- o To stay connected, maintain productive and mutual relationship with our esteemed alumni using all available online and offline means extensively.*
- o To build a bridge of communication for the alumni to interact and connect with the students to mentor them about career and life.*
- o To build avenues for the alumni to utilize the resources of our institution.*
- o To act as a facilitator between alumni and the institution for mutual benefits.*
- o To provide a common platform for all KJSCE alumni world-wide.*
- o To promote interaction between the KJSCE college and its Global Alumni, and promote the interest of the current, and future students of the college.*
- o To encourage establishment of similar national-level KJSCE Alumni Chapters within, and outside India.*

### *Committee*

- o Student body*
- o Alumni in-charges and advisors*
- o Faculty representatives*

*Social Networking Pages of Alumni Cell:*

*Facebook: <https://www.facebook.com/kjscealumni>*

*LinkedIn: <https://www.linkedin.com/profile/view?id=441755784>*

*Instagram: [http://instagram.com/kjsce\\_alumni\\_cell](http://instagram.com/kjsce_alumni_cell)*



## *BENEFITS OF AUTONOMY*

*Academic autonomy offers a lot of freedom & flexibility in academics as well as conduction of examinations. Following are few of the characteristic features of the college since becoming autonomous.*

- ◆ *Academic calendar of the entire year including details of individual semester are available to students in advance before commencement of any semester. This calendar includes starting and ending date of the term, details of various curricular/co-curricular/extra-curricular activities, schedule of examination including internal tests and end semester examination, results, vacation period etc. As a result, students are able to plan their activities beyond college engagements.*
- ◆ *Enrollment for minimum three audit courses in the areas of interest of a student along with compulsory credit courses of the programme for which the student has enrolled. These areas may be any of the following and could be extended further if need be.*
  - *Languages such as Sanskrit, German, Japanese, French, Spanish, Italian*
  - *Bhagwad Gita, Yoga*
  - *Sports like Athletics, Squash, Tennis, Football, Badminton, Kalaripayattu, Taekwondo*
  - *Dance, Music, Drama, Indian Classical Music in Instrumental or Vocal*
  - *Art such as sketching, painting*
  - *Finance and Accounting*
- ◆ *Enrollment to one compulsory interdisciplinary credit course from a list of courses floated by individual departments other than his/her parent department. Experts from industry or academia will be conducting these courses.*
- ◆ *Continuous evaluation of students throughout the semester with different evaluating tools as deemed fit by the teacher. Passing a course based on cumulative performance in internal as well as End Semester Examination (ESE). Eligibility criterion for next academic year based on % of credits earned rather than number of heads of passing.*
- ◆ *Transparency in examination system, wherein students are shown their answer papers, both for their internal tests as well as their ESE before the declaration of results. Knowing the answer key to the question paper, students have opportunity to self-assess their answer papers. This system helps in bringing uniformity in evaluation, building confidence in the assessment of papers and also eliminates the need of paying for photocopy or reassessment of answer paper resulting in delay in declaration of results.*
- ◆ *Provision for a Change of Branch after successful completion of first year; subject to the availability of a seat in the branch sought. The activity is conducted based on the merit in the first year examination for those students who have applied for a change of branch. The students admitted in NRI/ PIO/CIWGC/TFWS/GOI are not eligible to seek such branch transfer.*

# DISCIPLINE - GENERAL INSTRUCTIONS



*On confirmation of admission, the student will be governed by the Rules and Regulations of Discipline and Conduct of the Institution, the University of Mumbai and as prescribed & applicable by competent authority from time to time.*

*Notwithstanding anything contained in the rules, if the state Government takes any policy decision pertaining to FY/SY admission, then the same shall be brought into effect at that point of time as per the directives from the government from time to time.*

*Students while studying in this college, if found indulging in anti-national activities contrary to the provisions of Acts and Laws enforced by government or in any activity contrary to rules of discipline will be liable to be expelled from the college without any notice by the Principal of the College.*

*1) If a student is found indulging in activities, or acts or commission or omission which amount to an offence under Indian Penal Code or under any act or Statute or any other act or omission which amounts to breach of discipline, the student will be liable for disciplinary action and may be punished with fine or any other punishment including expulsion from the college.*

*2) If any of the statement made in application form or any information supplied by the candidate in connection with his/her admission is later on, at any time, found to be false or incorrect, his/her admission will be cancelled, fees forfeited and he/she be expelled from the College by the Director /Principal. An appeal against the order of expulsion, however, may be preferred within 7 days to the Director of Technical Education, Maharashtra State, Mumbai, whose decision in such cases will be final.*

*As per the guidelines of AICTE we have appointed complaint redressal officer. As per the order passed by the Supreme Court in Vishakha judgment, in order to prevent eve teasing of female students, the college has appointed women complaint redressal committee. Names of committee members are available on college website.*

## **ACTION AGAINST RAGGING**

*Maharashtra Prohibition of Ragging Act 1999 which is in effect from May 15, 1999 has the following provisions for Action against Ragging:*

- 1) Ragging within or outside any educational institution is prohibited.*
- 2) Whosoever directly or indirectly commits, participates in, abets or propagates ragging within or outside any education institution shall on conviction be punished with imprisonment for a term up to 2 years and /or penalty which may extend to` 10,000/-*
- 3) Any student convicted of an offence of ragging shall be dismissed from the educational institution and such a student shall not be admitted in any other educational institution for a period of five years from the date of order of such dismissal.*

## *Grievance Redressal Committee*

*The Grievance Cell has been set up to help Students to record and solve their grievances in matters directly affecting them, either individually or as a group. The committee consists of a faculty representative from each department. It is headed by a Convener to receive and handle all student grievances.*

## *Internal Committee*

*An Internal Committee (IC) is constituted under the powers conferred under the section 4 of the Sexual Harassment of Women at Workplace (Prevention, Prohibition and redressal) Act, 2013. IC provides a mechanism to redress the complaints of sexual harassment of women at workplace. A presiding officer is heading Internal Committee. An NGO member who is expert in this area is appointed to resolve the complaint cases of sexual harassment of women at workplace in Internal Committee.*

*Constitution of IC is as follows:*

- *Presiding Officer - A senior woman member*
- *Five to Six senior female and male members with representation from teaching and supporting staff*
- *Member from NGO*

## *Women Development Cell*

*Women Development Cell (WDC-KJSCE) is in place to conduct various activities to create awareness about sexual harassment of women at workplace, gender equality and gender sensitization. The cell also conducts activities for women empowerment.*

*Constitution of WDC is as follows:*

- *Ex-officio president - Principal*
- *Convener, WDC – senior female faculty*
- *Member (Teaching Staff) – senior female/male faculty*
- *Member (Representative of SC/ST/NT/SBC/OBC)*
- *Member (Non-academic staff)- senior female/male supporting staff*
- *Two Ladies Representatives from Students Council*
- *Member from NGO*

## *TRAVEL CONCESSION*

*Railway travel concession is provided to all the students travelling on Mumbai Suburban section of Central Railway and Western Railway as per the rules of Indian Railway to and fro from their place of residence.*



# GLIMPSES - 2017-18





Contact Us  
K. J. Somaiya College of Engineering  
Vidyavihar(E), Mumbai - 400 077,  
Maharashtra.

Phone 91-22-66449191  
Fax : 91-22-21025272

Website : [www.somaiya.edu/kjsce](http://www.somaiya.edu/kjsce)  
Email : [registrar.engg@somaiya.edu](mailto:registrar.engg@somaiya.edu)



## Map

